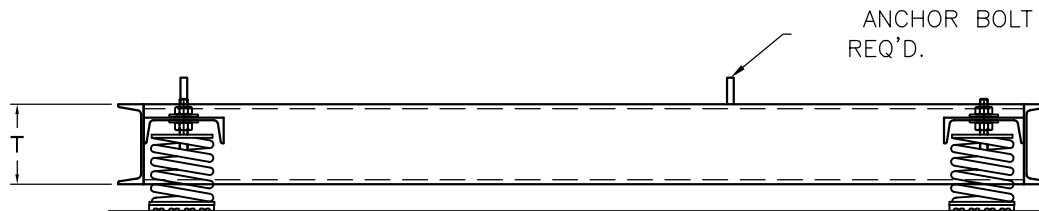
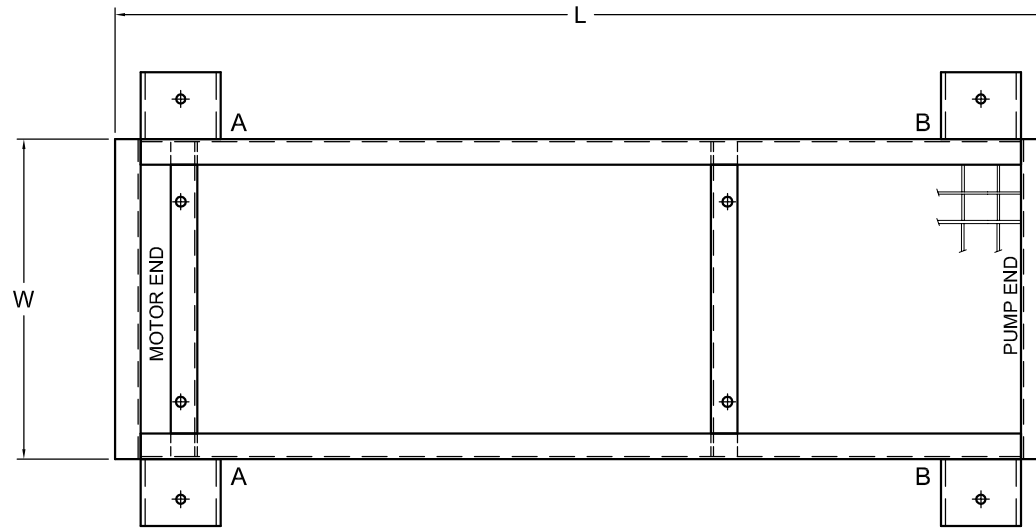


REV.	DESCRIPTION	DATE	BY



B	
A	
MTG PT.	ISOLATOR

SEE VMA- FOR ISOLATOR DETAILS.

**TAG:**

NOTE: ( ) BASE(S) REQUIRED.  
ALL DIMENSIONS IN INCHES.

CONCRETE WEIGHT \_\_\_\_\_  
BASE SHIPPING WEIGHT \_\_\_\_\_

NOTE: CHANNEL FRAME, REBAR,  
TEMPLATES, BRACKETS,  
ISOLATORS & ANCHOR BOLTS  
BY A/B. INSTALLATION BY OTHERS.

OTHER MATERIALS, COMPOUNDS, OR FINISHES WITH EQUAL OR SUPERIOR  
PROPERTIES MAY BE SUBSTITUTED AS THEY BECOME AVAILABLE.

**CERTIFIED FOR:**

JOB NAME: \_\_\_\_\_  
CUSTOMER : \_\_\_\_\_  
CUSTOMER P.O.: \_\_\_\_\_  
SALES ORDER: \_\_\_\_\_

**MODEL CPF NON-SEISMIC CONCRETE  
POURTING FORM INERTIA BASE**



**THE VMC GROUP**  
*The Power of Together*  
Bloomingdale, NJ 07403  
Houston, TX 77041

SCALE :

NONE

SHEET:



DRAWING NO.:

REVISION

A